

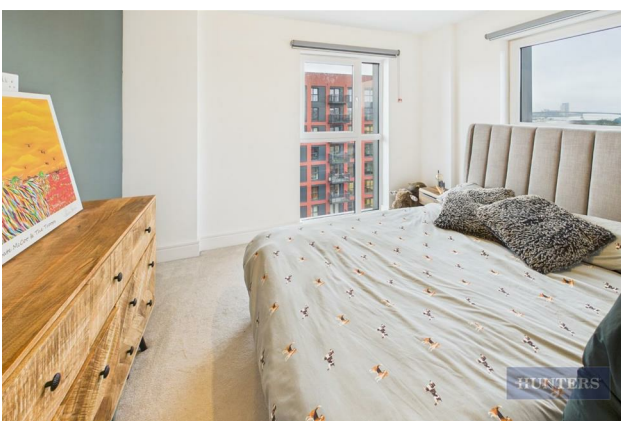
HUNTERS®

HERE TO GET *you* THERE

Flat 84, Granada House Meridian Way, Southampton, SO14 0FT

£1,150 Per Month

Property Images



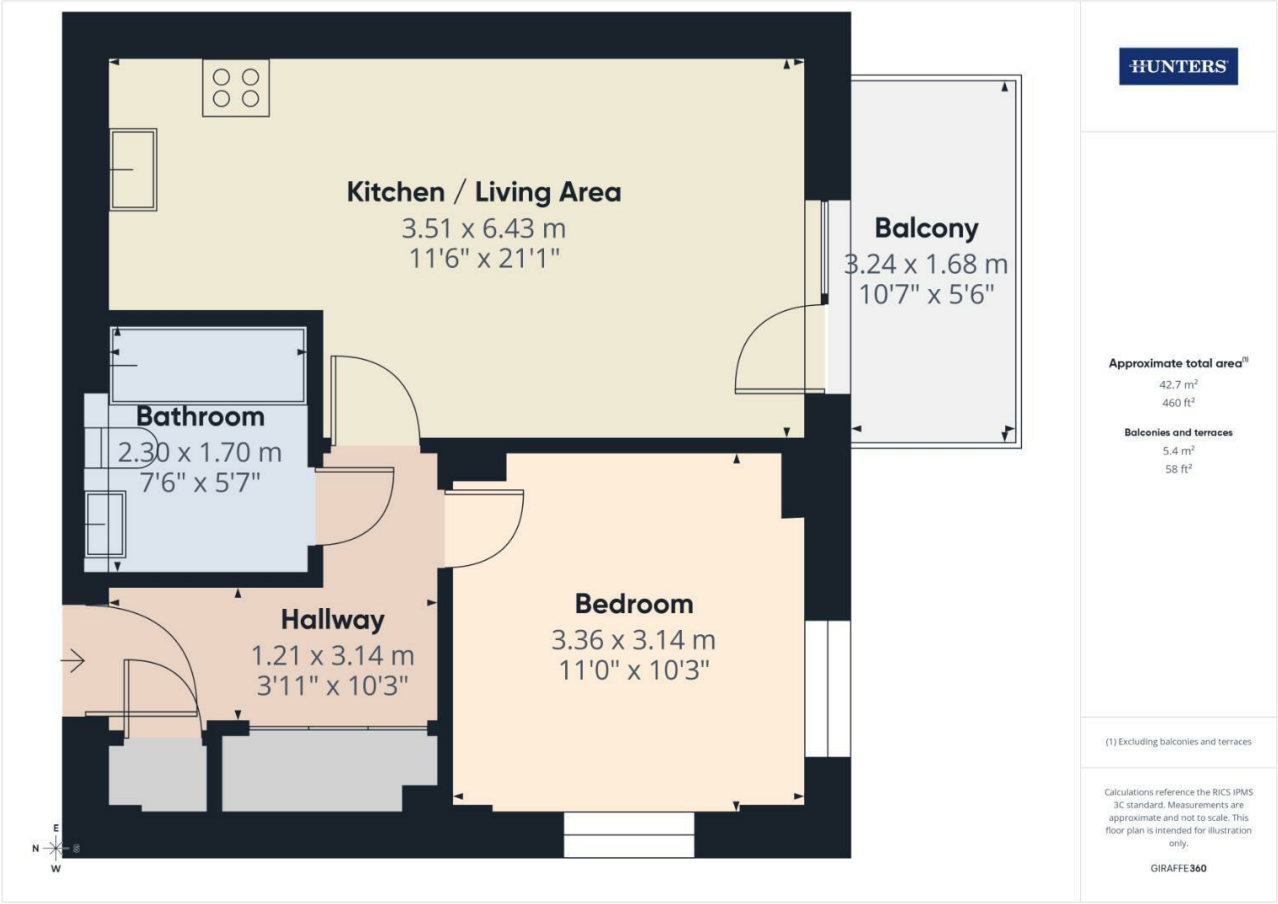
HUNTERS[®]

HERE TO GET *you* THERE

Property Images



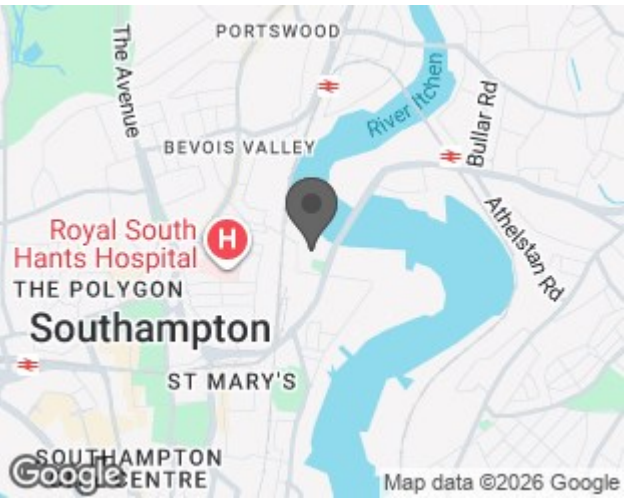
Floorplan



EPC

Energy Efficiency Rating		
	Current	Potential
Very energy efficient - lower running costs		
(92 plus) A		
(81-91) B		
(69-80) C		
(55-68) D		
(39-54) E		
(21-38) F		
(1-20) G		
Not energy efficient - higher running costs		
England & Wales	EU Directive 2002/91/EC	

Map



Details

Type: Flat Beds: 1 Bathrooms: 1 Reception: 1

Summary

Discover this charming, one-bedroom, one-bathroom property, neatly positioned all on one level. Enter into the inviting open-plan kitchen and living area, highlighted by a functional stove and ample room for comfortable living and dining. Adjacent, find a generously sized bedroom that promises restful nights. The stylish bathroom is fully equipped, making it an excellent space for leisurely soaks after a long day. Topped off with a sunny balcony that offers an ideal spot for morning coffee or evening relaxation. This property boasts a well-thought-out floor plan that maximizes space and delivers a comfortable living environment.

Features

• FURNISHED • SECURE, ALLOCATED PARKING FOR ONE CAR • MODERN DEVELOPMENT • FANTASTIC RIVER AND CITY VIEWS • UNDERFLOOR HEATING • INTEGRATED APPLIANCES • AVAILABLE NOW • SECURE COMMUNAL ENTRY • COMMUNAL GARDEN • WATERSIDE PROPERTY